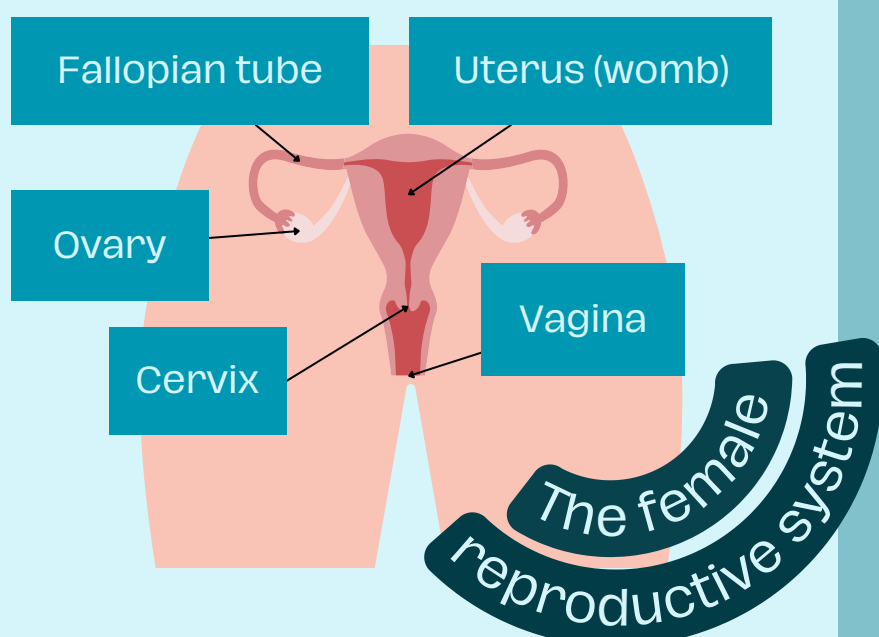


The Smear Test

What is the smear test?

The **smear** test (cervical screening) is a check to see if your **cervix** is **healthy**



- 1** A plastic device called the speculum gently opens the vagina to **access** the **cervix**
- 2** Swab is inserted to **collect** cervical cells
- 3** Cell sample is sent to be **investigated**
- 4** **Results** are sent back to you

Why you?



If you are aged **25 to 64** you will be offered a regular smear test

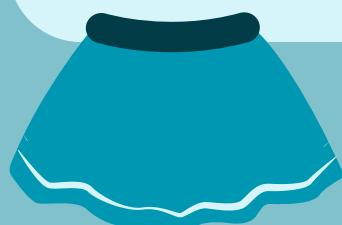
Why is it important?

It helps detect early signs of **cervical cancer**

You may not have any signs but it is better to **check early**



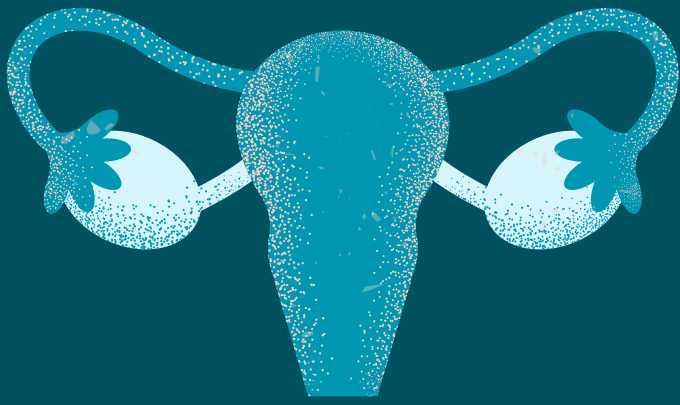
Skirts or dresses can be left on once you have removed your underwear!



You can ask the nurse to use a smaller speculum!

Bring someone with you!





The Smear Test

More Information

National Health Service. (2019). Overview - Cervical screening. NHS.

<https://www.nhs.uk/conditions/cervical-screening/>

National Health Service. (2023, July 14). What happens at your cervical screening appointment.

Nhs.uk. <https://www.nhs.uk/conditions/cervical-screening/what-happens/>

